

PART OF SEC. 17, T.5N., R.1W., S.L.B.M.
RIDGELINE SUBDIVISION PHASE 4

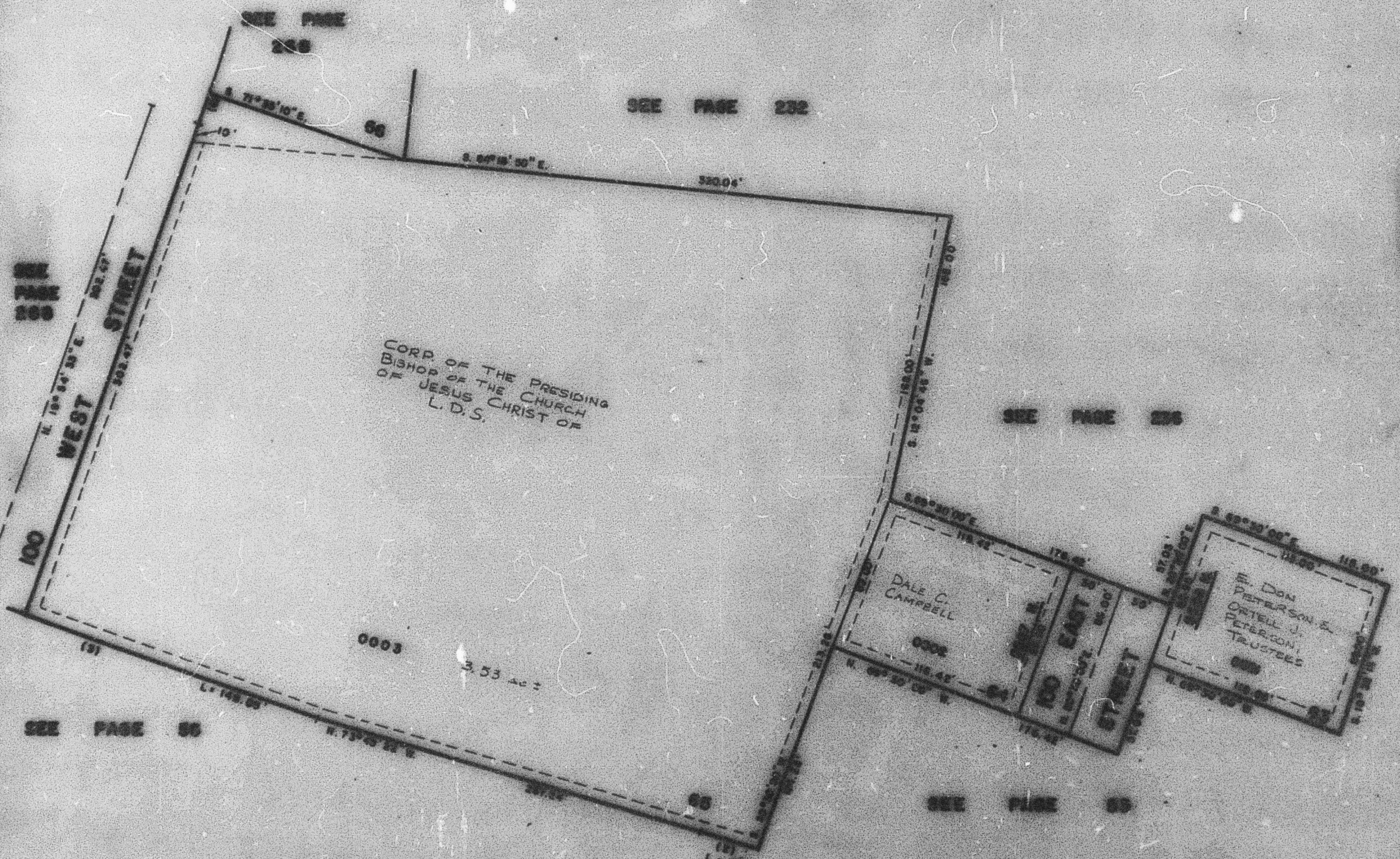
267

TAXING UNIT - 24

CITY OF WASHINGTON TERRACE

PLATS - 07-267

LOTS 63 - 65
SCALE - 1" = 50'



CORP OF THE PRESIDING
BISHOP OF THE CHURCH
OF JESUS CHRIST OF
L. D. S.

DALE C.
CAMPELL

E. DON
PETERSON &
ORVILLE J.
PETERSON,
TRUSTEES

CURVE DATA

1	1	1
1	1	1
1	1	1

SEE PAGE 78

FOR COMPLETE CURVE DATA
SEE PLAT OF THIS PLAT, PAGE 77

SEE ALL CURVE DATA
ON THIS PLAT, PAGE 77